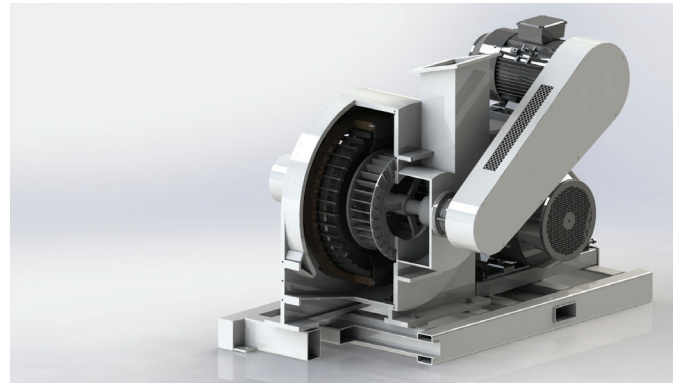
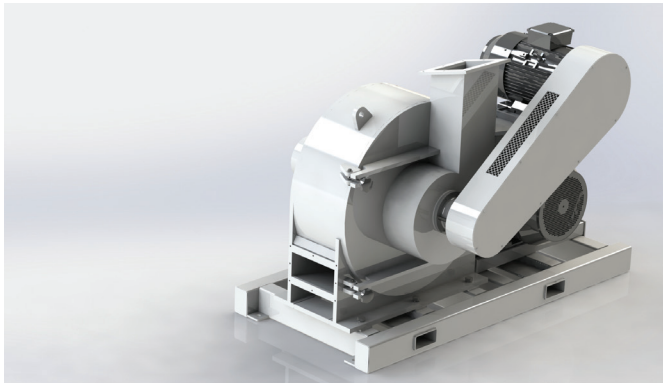


# Classifier Mill

## Models

A range of sizes designed for throughputs of between 1kg and 6 tonnes per hour.



## Applications

The Classifier Mill is an integrated impact mill and classifier designed to provide two distinct grinding sections, one for raw feed and the other for semi-ground material which is returned by the classifier for further processing. This feature provides improved grinding efficiency, overcoming the limitations of conventional units in which both feed and oversize returns are ground in a single operation.

The Classifier Mill range of equipment is widely used for reducing and controlling particle size in the chemicals, metal powders, minerals, plastics and recycling industries.

## Features and benefits

- Suitable for milling finished product of 300 microns and below
- Average particle range less than 10 microns, depending on material
- Integral forced-vortex classifier provides accurate control of product size with sharp cut-off
- On-stream adjustment of the product size by variable speed classifier rotor
- Controlled generation of superfines
- Low temperature milling ideal for products with low melt points
- Energy efficient operation
- Interchangeable grinding elements to suit a wide range of applications
- Individually replaceable tool-steel grinding blades
- Rapid and simple access for ease of cleaning and maintenance

## Classifier Mill equipment range technical data

CLASSIFIER MILL MODEL	MAXIMUM MILL SPEED (RPM)	CLASSIFIER SPEED (VARIABLE)	INSTALLED MILL POWER (KW)	INSTALLED CLASSIFIER POWER (KW)	NOMINAL AIRFLOW		PRESSURE DIFFERENTIAL ACROSS UNIT (mm/SWG)	APPROX. CAPACITY SCALE FACTOR
					(M <sup>3</sup> /HR)	(CFM)		
CLM 18	12,700	10,000	3	0.37	260	153	550	1
CLM 35	6,550	7,000	11	2.2	1,050	617	500	4
CLM 50	4,500	4,000	30	5	2,300	1,350	380	9
CLM75	3,050	3,200	55	11	5,100	3,000	380	20
CLM100	2,290	2,400	112	11	9,500	5,500	380	36

**Note:** All data provided is for guidance only and may be varied at any time by the company.

British Rema Process Equipment Ltd  
Image Works, Foxwood Close  
Chesterfield, Derbyshire S41 9RB  
United Kingdom

+44 (0)1246 269 955  
equipmentknowhow@britishrema.com  
britishrema.com

Registered in England No. 05556424 | VAT No. 872 0080 45